



Round 1 Applicants Profiles

Adaptation Planning Grant Program



SUMMARY

The Governor's Office of Planning and Research has awarded \$8 million in project grants in Round I of the Adaptation Planning Grant, funded by Governor Newsom's 2021-22 Climate Budget and established through SB 170. These grants are designed to help California communities address climate risks and enhance their resilience based on the state's best available climate science.

California's climate impacts are expected to intensify, posing significant risks, especially to vulnerable populations. The first-round projects aim to assist local governments, community-based organizations, and tribes in assessing local climate hazards, engaging with communities, and developing equitable, community-driven strategies to mitigate on-the-ground climate impacts. The substantial demand for funding is evident, with \$63 million requested for the available \$8 million.

These fourteen projects represent a significant step toward encouraging cross-sector collaboration and equity in California's statewide climate adaptation efforts. Nine of the projects are situated within Justice40 communities, aligning with the Biden Administration's emphasis on investing in areas historically affected by pollution. Of these, three projects are led or co-led by California Native American tribes. One of the grant's objectives is to strengthen local capacity, enabling climate-vulnerable communities to access additional state and federal funding.

ENVIRONMENTAL JUSTICE ELEMENT, SAFETY ELEMENT UPDATE, AND EQUITABLE CLIMATE AND RESILIENCE METRICS

SUMMARY

The City of Berkeley has been awarded \$497,042 to update the Safety Element of its General Plan, develop an Environmental Justice Element for this plan, and create metrics that will help monitor and measure the achievement of the City's climate and resilience goals. Along with its partners, the Ecology Center and the Berkeley Climate Equity Collaborative, the City will focus on community-driven planning methods as they update the General Plan and create opportunities for community engagement.

Currently, the city of Berkeley faces sea level rise, extreme heat, and flooding among a wide array of environmental hazards. With this grant, the City and its partners will identify additional risks vulnerable communities face and update its Safety Element in order to plan accordingly and provide better protection for its residents. Furthermore, by identifying these hazards, the City will be able to incorporate this information into the Environmental Justice Element of its General Plan and ensure this element is equitable and appropriate for the City's residents.

The City of Berkeley has engaged with marginalized communities to develop the Equity Guardrails. This

collaboration demonstrates the City's commitment to racial equity and social justice. With this grant, the City and its partners will continue this work and involve community members and marginalized peoples to develop metrics and policies that will allow them to monitor their progress as they work towards their climate and resilience goals.

LEAD APPLICANT

City of Berkeley

PARTNERS

The Ecology Center, Berkeley Climate Equity Collaborative

TOTAL AWARD

\$497,042

CONTACT PERSON

Katie Van Dyke

kvandyke@berkeleyca.gov



CITY OF SAN FERNANDO CLIMATE ACTION AND RESILIENCE PLAN

SUMMARY

The City of San Fernando has been awarded \$599,918 to update its General Plan and complete a Climate Action and Resilience Plan (CARP). Alongside the Fernandeano Tataviam Band of Mission Indians, Pacoima Beautiful, and Climate Resolve, the City will work towards a plan that integrates community input, is rooted in equity, and specifically targets inequalities that affect the city's residents. This project aims to fill the gaps identified in Phase 1 of the City's plan and adopt measures and solutions focused on climate adaptation.

San Fernando City and its partners are concerned with the extreme heat the city faces, especially during the summer months (See Figure 2). This hazard exacerbates the effects of air pollution caused by the three major highways present in the city. With this grant, the City and its partners will focus on developing a safety element.

LEAD APPLICANT

City Of San Fernando

PARTNERS

Fernandeano Tataviam Band Of Mission Indians, Pacoima Beautiful, And Climate Resolve

TOTAL AWARD:

\$599,918

CONTACT INFORMATION

Carlos Hernandez

Assistant to the City Manager, City of San Fernando

chernandez@sfcity.org

CalEnviroScreen 4.0 Results

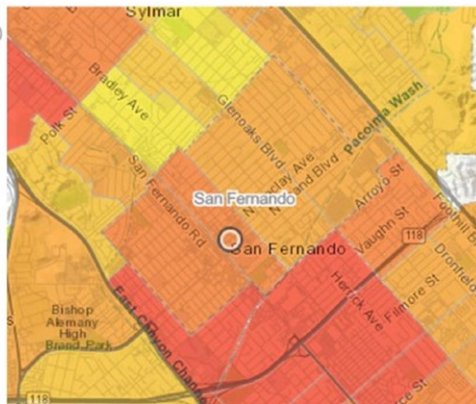
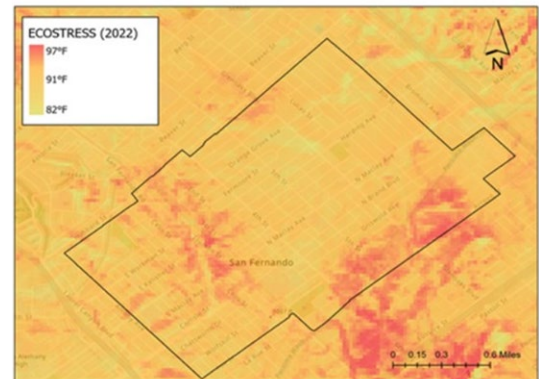


Figure 2: Mean temperature for summer in San Fernando

City of San Fernando - NASA/JPL ECOSTRESS (2022)
Mean Temperature between June 2022 - September 2022



PLANNING FOR AN EQUITABLE, CLIMATE-SAFE LAKE

SUMMARY

The county of lake has been awarded \$649,350 To develop risk reduction projects through planning and the implementation of adaptation strategies. With its project partners, the county will focus on community engagement and the creation of a climate action plan that includes climate evacuation routes. In order to inform this plan, the county and its partners will assess the vulnerabilities that affect its communities. The county of lake is concerned with its community's ability to adapt to climate change and manage the effects of extreme events such as fire hazards. Consequently, the county will develop an inclusive framework that can improve climate adaptation planning through collaboration. Additionally, with this grant, the county of lake will work towards supporting the risk reduction authority (raa) in becoming a self- sustaining climate action provider. Throughout the establishment of this authority, equity, diversity, and inclusion will be embedded into its leadership and processes to ensure the best outcomes for all vulnerable communities.

LEAD APPLICANT

County Of Lake

PARTNERS

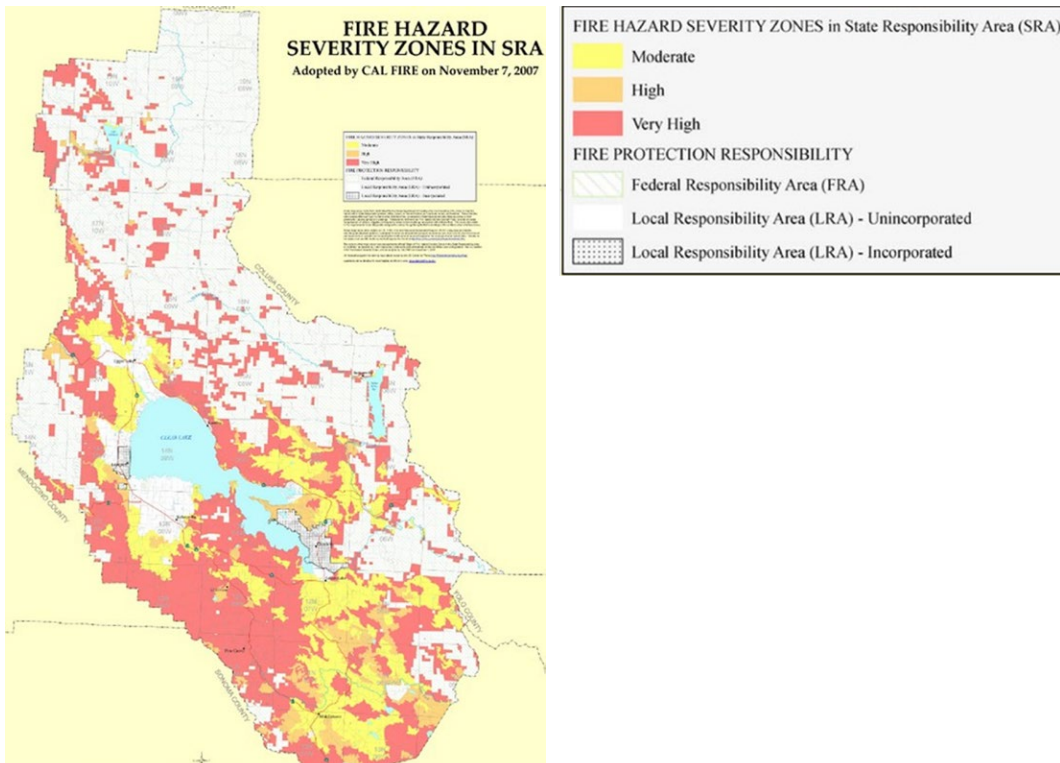
Lake County Community Risk Reduction Authority (RRA), Lake County Resource Conservation District (LCRCD), Lake County Fire Safe Council

TOTAL AWARD

\$649,350

CONTACT INFORMATION

Terre Logsdon
Chief Climate Resiliency Officer/Tribal Liaison
terre.logsdon@lakecountyca.gov



HOOPA VALLEY TRIBE CLIMATE ADAPTATION PLAN

SUMMARY

Use this language instead,. “The Hoopa Valley Tribe has been awarded \$338,448 to develop a comprehensive climate adaptation project that is both immediate and practical, aimed at addressing the most critical climate change impacts experienced by the Tribe and its members. This project will encompass a series of essential steps, including conducting climate adaptation planning and scoping activities, evaluating climate change vulnerability, and ultimately crafting a Climate Adaptation Plan. The Hoopa Valley Reservation, located in northeastern Humboldt County along the Trinity River, faces unique challenges. It’s a Severely Disadvantaged Community, with significant income disparities and limited access to resources. As such, the community is especially vulnerable to the escalating threat of wildfires associated with climate change. Wildfires have had detrimental effects on the health of tribal members and have impacted the sustainability of the Tribe’s economic base.

Moreover, the Hoopa Valley Tribe holds a deep connection to the Trinity River and its salmonid fishery, which is integral to its culture and subsistence. Historically, the Trinity River supported a substantial Fall-run chinook salmon population, but the construction of dams in 1963 significantly altered river flows, leading to widespread habitat degradation and the decline of salmon populations. The Tribe’s Climate Adaptation Plan project aims to preserve the salmonid fishery, vital not only to the Tribe’s cultural heritage but also crucial for subsistence, community well-being, and overall economic sustainability.

Recognizing these challenges, the Hoopa Valley Tribe’s Climate Adaptation Plan project is designed to be adaptable in the long term. It will be developed based on extensive community engagement, data analysis, traditional ecological knowledge, and the best available scientific research. As a collective effort, with multiple tribal departments, partner organizations, and external agencies contributing to its successful implementation, the project structure and partnerships are carefully designed to ensure that it reflects the best interests of the tribal community and incorporates their valuable insights and needs.

The Tribe envisions this project as one that will not only address climate change impacts but will also create co-benefits. By considering the interconnectedness of climate impacts, the project will prioritize strategies that yield social equity, greenhouse gas mitigation, economic benefits, and environmental co-benefits. Forest resilience, in particular, will be a focus, addressing various factors related to forests, including ecosystem health, habitat protection, employment opportunities, and wildfire risk reduction. This comprehensive project aims to safeguard the Tribe’s cultural heritage, enhance community resilience, and secure its economic sustainability in the face of climate change.”.

LEAD APPLICANT

Hoopa Valley Tribe

PARTNERS

Hoopa Valley Tribe Planning Department

TOTAL AWARD:

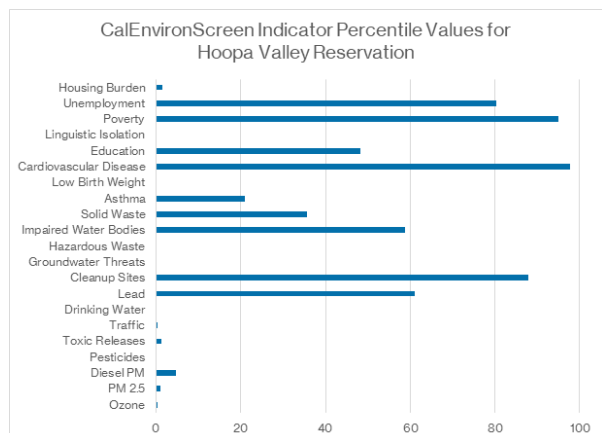
\$338,448

CONTACT INFORMATION

Jaclyn Robinson

Planning Director, Hoopa Valley Tribe

planningdirector.hoopatribe@gmail.com



LAKE ELSINORE CLIMATE ADAPTATION PLAN

SUMMARY

Lake Elsinore has been awarded \$401,100 to develop a Climate Adaptation Plan. This plan will evaluate the vulnerabilities faced by the residents of the city and identify the impacts caused by them. For this plan, the City will assess the current adaptive capacity of residents and provide strategies to improve this capacity. Along with its partner the Social Work Action Group (SWAG), the City of Lake Elsinore will implement community engagement activities in order to understand effects of climate change as experienced by its residents. Once these impacts are identified, the two entities will work together to prioritize suggestions from vulnerable communities and create strategies to meet their needs.

The objectives of this CAP are to plan for a variety of risks through the implementation of collaborative approaches, achieve community resilience, and embed equity into planning to create more just outcomes. Figure 2 highlights one of the priorities of this CAP. Exposure to wildfires can affect people's health and the City of Lake Elsinore and its partner SWAG will develop the CAP to address the impacts of wildfire exposure, as well as extreme heat, lack of access to services, and severe weather.

LEAD APPLICANT

City Of Lake Elsinore

PARTNERS

Social Work Action Group (SWAG)

TOTAL AWARD

\$401,100

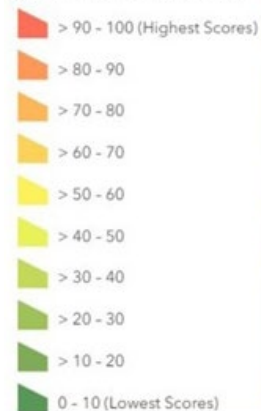
CONTACT INFORMATION

Todd Parton

Assistant City Manager, City of Lake Elsinore

tparton@lake-elsinore.org

CalEnviroScreen 4.0 Results



LA'S COOL CAPITAL STACK

SUMMARY

Los Angeles County has been awarded \$506,000 to develop community-led climate- resilient infrastructure projects along with the LA County Metro and a coalition of community-based organizations, Infrastructure Justice Los Angeles (IJLA). These projects will address LA county's priority issues it previously identified in its 2021 Climate Vulnerability Assessment (CVA) such as extreme heat and how this hazard affects disabled people, unhoused individuals, and outdoor workers. This CVA was not broad enough to suggest personalized interventions for each community. With this grant, LA County and its partners will create an agency-community collaborative to center equity and empower community members and organizations to guide the projects and expand the scope of the CVA. This collaborative will identify hotspots of need and local community partners, and engage community members in the envisioning of infrastructure interventions in order to provide a local perspective. Additionally, this partnership will build upon the already-established relationship between LA County agencies and the IJLA organizations, and serve as an innovative model of collaboration.

LEAD APPLICANT

Los Angeles County

PARTNERS

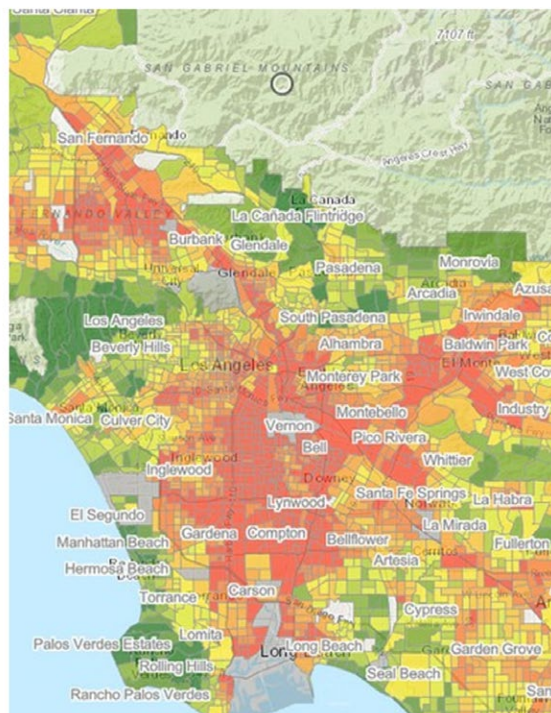
LA Metro, Infrastructure, Los Angeles County, Justice Los Angeles (IJLA)

TOTAL AWARD

\$556,000

CONTACT

Rebecca Ferdman
Sustainability Policy Advisor Los Angeles County
Chief Sustainability Office
rferdman@cso.lacounty.gov



RAMONA BARONA CLIMATE ADAPTATION AND ACTION PLAN

SUMMARY

The Ramona Municipal Water District (RMWD) and the Barona Band of Mission Indians received a \$596,600 grant to develop a climate adaptation and action plan. The County of San Diego is currently conducting a Climate Adaptation Plan (CAP) that excludes land under tribal jurisdiction and land owned and operated by RMWD. In order to ensure their lands are adapting to the changing climate, these two entities have partnered to create their Climate Adaptation and Action Plan. The project area is affected by a variety of climate hazards including extreme heat, water shortages, and wildfires (Figure 1). Developing a climate adaptation and action plan will allow the partners to build a resilient future for their communities and ensure they have the capacity to adapt to the issues affecting them. The Climate Adaptation and Action Plan will be rooted in equity and justice as well as community perspectives. These principles will ensure that the plan addresses issues in vulnerable communities.

LEAD APPLICANT

Ramona Municipal Water District

PARTNERS

Barona Band Of Mission Indians

TOTAL AWARD:

\$596,600

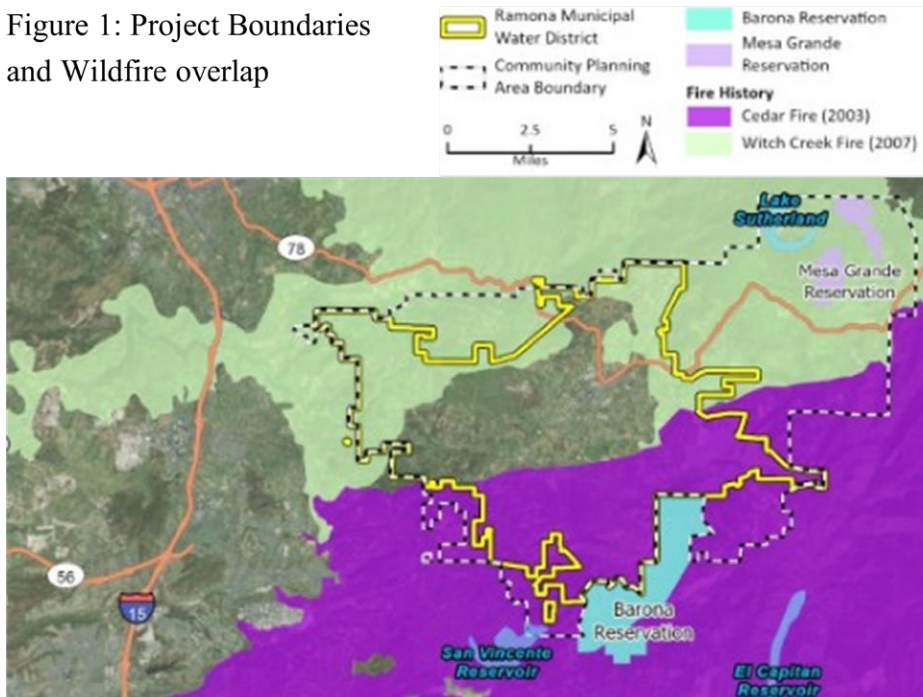
CONTACT INFORMATION

Erica Wolski

Ramona Water District General Manager

ewolski@rmwd.org

Figure 1: Project Boundaries and Wildfire overlap



SAN JOSÉ INTERDEPENDENT WATER, ENERGY, SECURITY & ELECTRIFIED TRANSPORTATION

SUMMARY

The City of San Jose was awarded \$649,970 to develop a climate adaptation planning process that incorporates resilience to city water, energy, security, safety, and transportation services. This process will incorporate community input and leverage the services' interconnections. Along with the Santa Clara Valley Water District and the San Francisco Bay Area Planning Research Association, the City of San Jose will prioritize financial and social investments to plan for climate actions, lower Greenhouse Gas Emissions (GHG), and engage with community members. The City and its partners will prepare projects that can fit the needs of communities and be adaptable to future hazards. As San Jose is impacted by the effects of climate change (see Figure 1), the City and its partners will develop this climate adaptation plan that will focus on critical services and infrastructure to address the needs of vulnerable communities.

LEAD APPLICANT

San Jose City

PARTNERS

Santa Clara Valley Water Districts, The San Francisco Bay Area Planning And Urban Research Association

TOTAL AWARD:

\$649,970

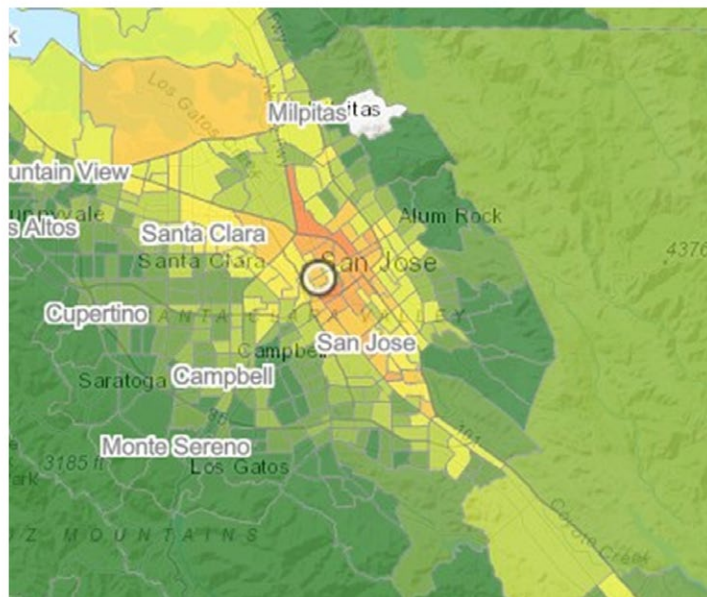
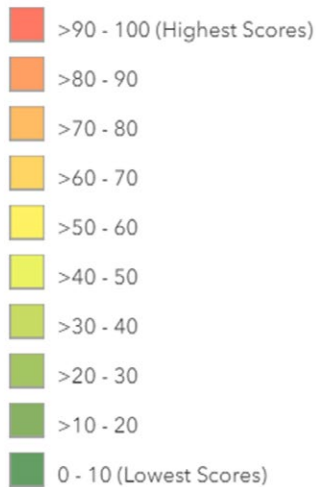
CONTACT INFORMATION

Erica Garaffo

Lead Resilience Strategist

Overall Percentile

CalEnviroScreen 4.0 Results



SAN MATEO COUNTY ONEWATERSHED CLIMATE RESILIENCE FRAMEWORK

SUMMARY

San Mateo County and the County Association of Governments have partnered with six water agencies and the community-based organization Climate Resilient Communities to implement the OneWatershed Climate Resilience Framework. They have been awarded \$649,648 for this project which seeks to develop a framework that empowers communities to identify the risks they are affected by as well as pathways to becoming resilient. The County and its partners seek to dismantle the current culture of isolation that exists in water-related infrastructure planning and address climate adaptation in a robust manner. This project will facilitate the development of a OneWatershed shared-risk water infrastructure asset and community vulnerability data inventory, as well as a OneWatershed Framework considering infrastructure, climate hazards, and community vulnerability criteria for prioritizing projects. For this project, the San Bruno Creek watershed will be used as a case study as it is a highly flood-prone region. This case study will influence a OneWatershed Resilience Plan that includes the infrastructure asset and data inventory.

LEAD APPLICANT

San Mateo

PARTNERS

City/County Association of Governments of San Mateo County, Climate Resilient Communities (CRC), San Mateo County Flood & Sea Level Rise Resiliency District (OneShoreline), County Office of Sustainability, Bay Area Water Supply and Conservation Agency, City of San Bruno, Public Works, City of South San Francisco, Water Quality Control Plant

TOTAL AWARD:

\$649,648

CONTACT INFORMATION

Reid Bogert, Stormwater Specialist
 San Mateo Countywide Storm Water Program
rbogert@smcgov.org



SAN RAFAEL CLIMATE ADAPTATION PLANNING COLLABORATIVE

SUMMARY

The Canal District of the City of San Rafael has been awarded \$644,200 to co- create solutions that will increase resiliency in the area with the Canal Alliance, the University of California Berkeley, the Multicultural Center of Marin, and the Marin County Department of Public Works. This area has high vulnerability statistics (see Figure 1), hence why it is important for the Canal to gather community input in order to understand the climate hazards they are concerned about and to prioritize adaptation measures the community deems appropriate. Part of the funding for this project will be used for the capacity-building of community-based organizations and to provide Science, Engineering, Technology, and Mathematics (STEM) education for Canal District students. The Canal District is affected by sea-level rise and ethnic segregation. Providing methods of adaptation planning and the resources this project entails will allow for this community to work towards long-term resilience.

LEAD APPLICANT

San Rafael City

PARTNERS

Canal Alliance, UC Berkeley, Multicultural Center Of Marin, Marin County Department Of Public Works

TOTAL AWARD

\$644,200

CONTACT INFORMATION

Kate Hagemann
Climate Adaptation and Resilience Planner
kate.hagemann@cityofsanrafael.org

VULNERABILITY STATISTICS

Statistics for the Canal District census tracts. Data is presented for tract 6041112202 and 6041112201 respectively

	More housing burdened than 93 & 99% <small>of other census tracts in California [1]</small>
	The percent of adults without a high school education is higher than in 86 99% <small>of other census tracts in California [1]</small>
	The percent of linguistically isolated householders is higher than in 90 and 99% <small>of other census tracts in California [1]</small>
	The percent without tree canopy is 89% and 99.5% <small>The County average is 65.2% [2]</small>
	The risk index rating is "very high" when compared to the rest of the U.S. 99.5 and 99% of U.S. Census tracts have a lower Risk Index [3]

Sources:

[1] CalEnvironScreen 4.0, [2] Climate Change & Health Vulnerability Indictors for California, [3] FEMA's National Risk Index

SHADE EQUITY MASTERPLAN FOR THE UNINCORPORATED EASTERN COACHELLA VALLEY

SUMMARY

The Kounkey Design Initiative (KDI), a community development and design non-profit, partnered with the University of California Los Angeles and the Oasis Leadership Committee to prepare a Shade Master Plan for the Eastern Coachella Valley's (ECV) unincorporated communities. Their \$644,411 grant will be spent on these low-income and language-segregated communities through the assessment of shade capacity and the identification of strategies to incorporate shade in priority areas. The Coachella Valley is notorious for its desert climate and the Eastern communities are not exempt. This region is affected by multiple sources of pollution as evidenced in Figure 1, and is also burdened with high levels of poverty, low levels of education, and limited access to healthcare. The residents of the East Coachella Valley experience extreme heat levels on a daily basis which affect their everyday lives. By developing a Shade Master Plan, KDI and its partners will provide relief for the ECV community. Through community engagement, they will make sure residents are in charge of decisions. KDI is already aware of some of the issues these communities face and will make sure to provide accessible opportunities.

LEAD APPLICANT

Kounkey Design Initiative

PARTNERS

University Of California Los Angeles, Oasis Leadership Committee

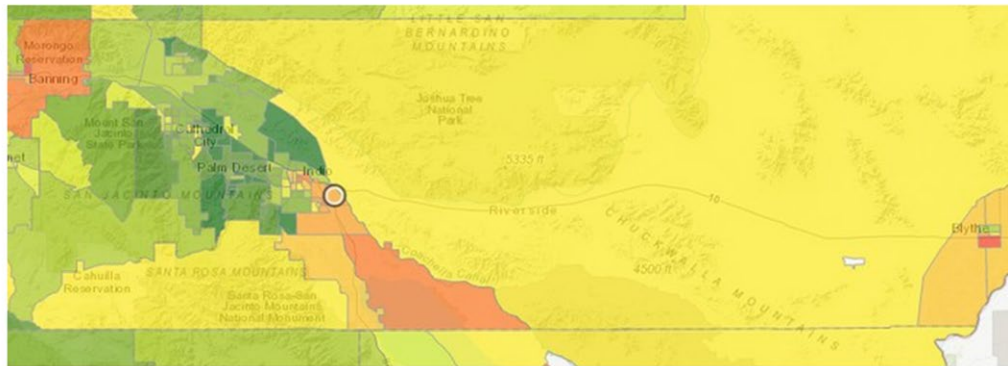
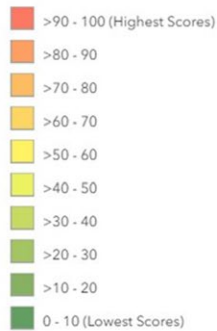
TOTAL AWARD

\$644,411

CONTACT INFORMATION

Christian Rodriguez
Community Associate Konunkuey Design Initiative
christian@kounkuey.org

CalEnviroScreen 4.0 Results



STOCKTON CLIMATE ACTION PLAN

SUMMARY

The City of Stockton has been awarded \$650,000 to update its Climate Action and Adaptation Plan (CAP). Their current plan was last updated in 2014, creating opportunities for better planning and more equity-focused adaptation methods. Through community engagement, the City and its partners will implement residents' feedback and empower community members to be involved in decision-making. This process will ensure the needs of vulnerable communities are met and the projects developed are relevant and impactful. Previous opportunities brought the city and community-based organizations together and this grant will continue their preceding work. Along with Rise Stockton, a collective of organizations, the City will include community perspectives and collaborate on the CAP.

Stockton residents experience poverty and are negatively affected by multiple sources of pollution which leaves them vulnerable to developing a variety of health conditions (Figure 1). By developing this CAP, the City of Stockton and its partners have committed to mitigating the effects of pollution and emissions and providing a good quality of life for all of its residents. Additionally, this CAP will allow the City to envision a comprehensive adaptation strategy that drives investments and incorporates community perspectives for a healthier Stockton.

LEAD APPLICANT

City Of Stockton

PARTNERS

Rise Stockton

TOTAL AWARD

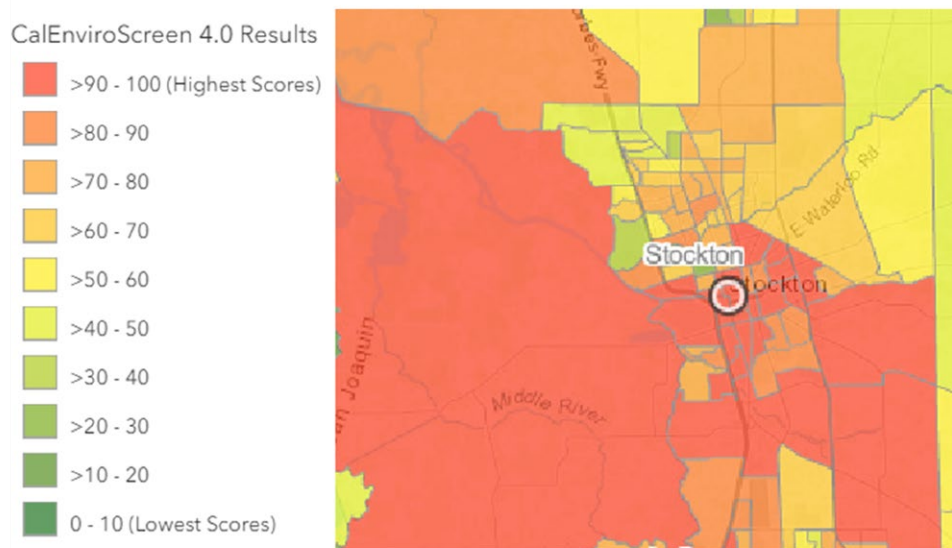
\$650,000

CONTACT INFORMATION

Grant Kirkpatrick

Program Manager - City of Stockton

grant.kirkpatrick@stockton.ca.gov



WRCOG ENERGY RESILIENCE PLAN 2.0 MICROGRID FEASIBILITY STUDIES

SUMMARY

The Western Riverside Council of Governments (WRCOG) has been awarded \$421,000 to develop an Energy Resilience Plan 2.0. This Plan will select up to ten sites to conduct microgrid feasibility studies in order to increase adaptive capacity. It will build upon the previous work of the ERP's first version which was developed as a response to the power outages at critical public agencies. WRCOG has partnered with GRID Alternatives Inland Empire (GRID) in order to incorporate community perspectives and meet the needs of the most vulnerable residents. The people of this area have high levels of poverty and unemployment and are exposed to multiple sources of pollution (Figure 1). The proposed ERP will address some of their needs by providing reliable energy sources that can also help with wildfire mitigation by eliminating reliance on transmission infrastructure and instead using small, local grids.

For this project, WRCOG and GRID will conduct community outreach and engagement sessions through community visioning and participatory budgeting. GRID's continued presence in the Western Riverside region will help streamline the engagement process and ensure that community perspectives are prioritized.

LEAD APPLICANT

Western Riverside Council Of Governments

PARTNERS

University Of California Los Angeles, Oasis Leadership Committee

TOTAL AWARD

\$471,000

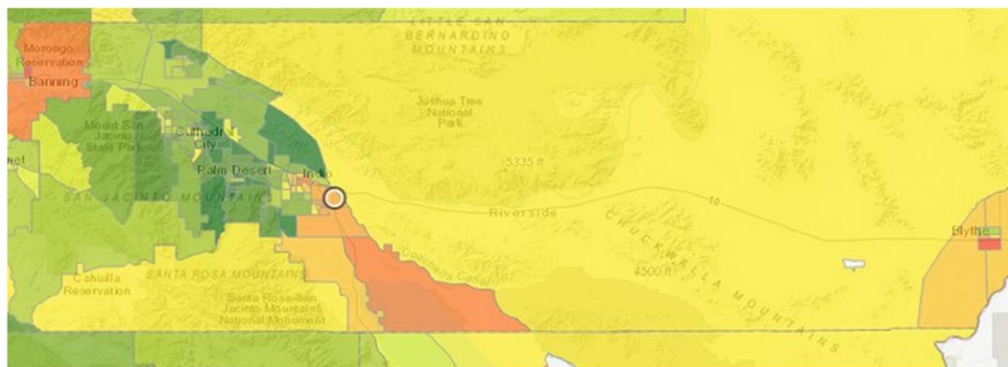
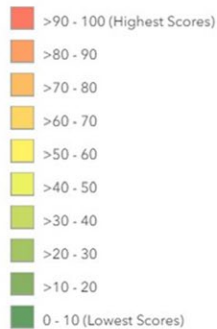
CONTACT INFORMATION

Daniel Soltero

Program Manager Western Riverside Council of Governments

dsoltero@wrcog.us

CalEnviroScreen 4.0 Results



YOSEMITE SLOUGH ADAPTATION PLAN

SUMMARY

The Yosemite Slough Adaptation Plan (YSAP) will be funded with a \$649,000 climate resilience and adaptation grant. This plan will address the inequities in adaptation planning between Bayview Hunter's Point and the rest of San Francisco's urban waterfront. The City and County of San Francisco will work alongside a multitude of community-based organizations such as En2Action, BAYCAT, and Young Community Developers. This project has the most amount of partners among all the awarded applications. Consequently, the Yosemite Slough Adaptation Plan has a strong community engagement aspect that will ensure the development of a plan rooted in the needs of vulnerable communities. The goals of this plan include ensuring racial equity in all outcomes of the project and building the area's climate resilience by utilizing nature-based strategies to address sea-level rise, pollution, extreme heat, etc (Figure 1). Additionally, the YSAP seeks to highlight the replicability of such a project in vulnerable areas by taking advantage of State funding.

LEAD APPLICANT

City And County Of San Francisco

PARTNERS

SF Planning Team, En2action, Port Of San Francisco, Baycat, Bayview And Hunters Point Cacs, Young Community Developers (YCD), Sf Estuary Institute (SFEI), California State Parks Foundation (CPSF)

TOTAL AWARD

\$649,000

CONTACT INFORMATION

Jeremy Shaw

Principal Planner - SF Planning

jeremy.shaw@sfgov.org

CalEnviroScreen 4.0 Results

