

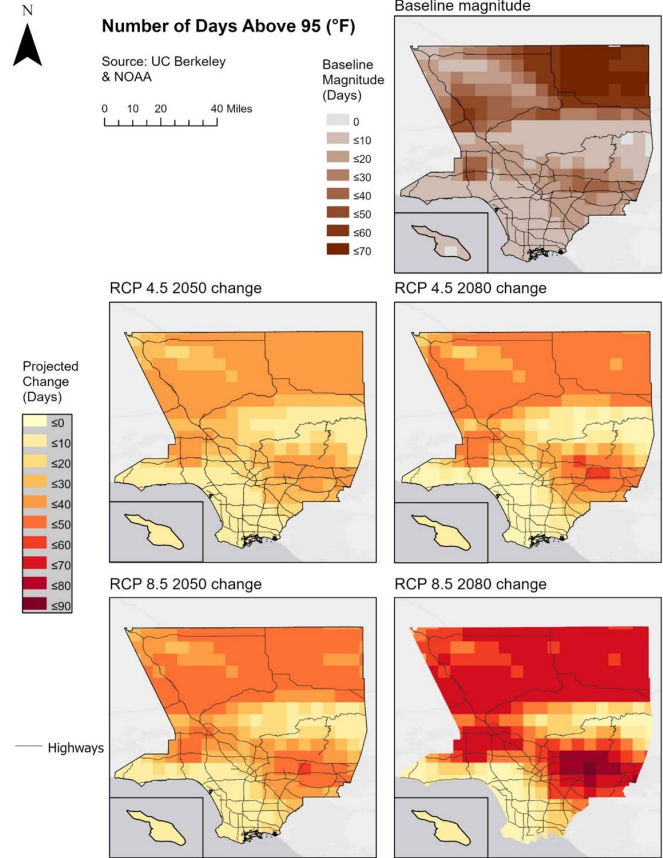


# County of Los Angeles Heat Resilience

Photo: Mashable

# Extreme Heat

- Projections indicate that by 2080, the **Antelope Valley, San Fernando Valley, and San Gabriel Valley** could experience **more than 95 to 155 days per year** with temperatures above 95°F under RCP 8.5.



Projected change in the number of days per year above 95°F in LA County, under RCP 4.5 and RCP 8.5, by 2050 and 2080. Projected changes are relative to historical baseline conditions (1986-2005).

# Jet Propulsion Laboratory

# NASA Jet Propulsion Laboratory ECOSTRESS Partnership

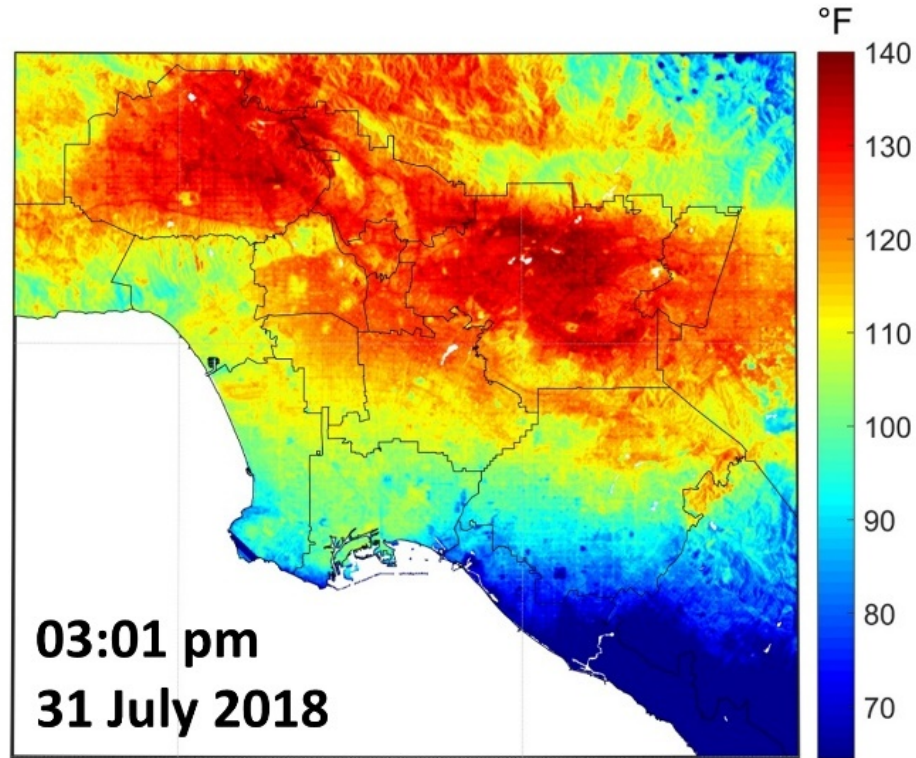
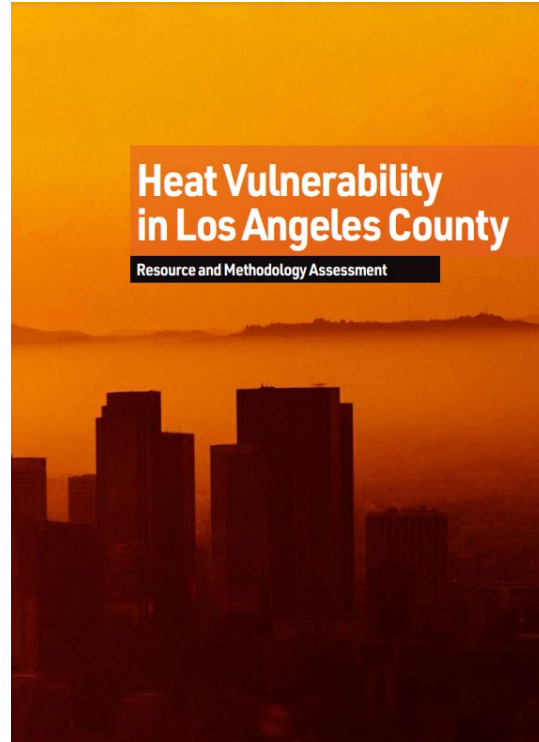




Photo: Suzanne Neubauer

# Southern California Resilience Initiative

# Southern California Resilience Initiative Columbia Center for Resilient Cities & Landscapes



# Climate Insurance Working Group



# California Department of Insurance Climate Insurance Working Group



- Representing Los Angeles area and local governments on nation's only state insurance commission body focused on climate change
- Identifying insurance solutions tailored to local government as they respond to the public health implications of extreme heat
- Working Group is planning a public release of recommendations in late spring



# OurCounty Heat Resilience

# 7 Key OurCounty Heat Resilience Actions



## Action 26

Develop minimum requirements and best practices for amenities, programming, and accessibility of cooling centers.

## Action 30

Build shade structures at major transit stops, such as those identified in Metro's Active Transportation Strategic Plan, prioritizing communities with high heat vulnerability.

## Action 44

Implement locally tailored, youth-based tree and vegetation planting and maintenance projects in collaboration with community-based organizations to reduce the impacts of heat island in low canopy areas.

## Action 52

Promote walkability through various tools, including zoning that enables a mix of uses, and pedestrian enhancements.

## Action 43

Create and implement a community-informed Urban Forest Management Plan that incorporates equitable urban forest practices, identifies County funding sources, and prioritizes:

- Tree- and park-poor communities;
- Climate and watershed-appropriate and drought/pest-resistant vegetation;
- Appropriate watering, maintenance, and disposal practices;
  - Shading, and;
  - Biodiversity.





## Action 28A

Conduct a countywide climate vulnerability assessment that addresses social vulnerability and use it to guide priorities for investments in public health preparedness, emergency preparedness and response planning, and community resiliency.

## Action 28B

Conduct a countywide climate vulnerability assessment that addresses physical infrastructure vulnerability and use it to guide priorities for investments in building upgrades, infrastructure improvements, and zoning and code changes.

## Project Vision

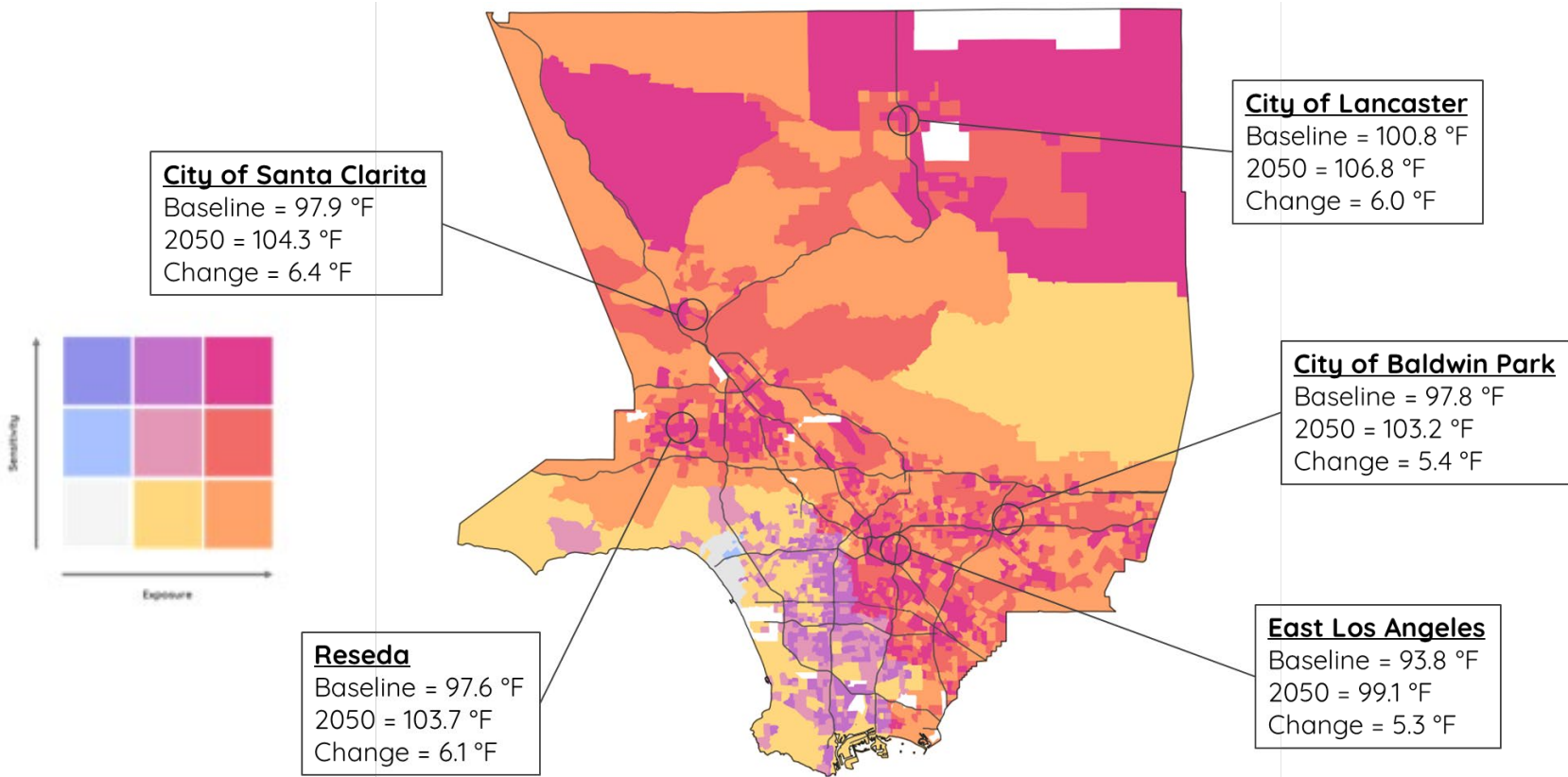
- Easily accessible to cities, community -based organizations, and the public
- Examines health impacts from an equity standpoint
- Comprehensive and interactive

## Timeline

- Release expected Summer 2021



RCP 8.5, 2050



# Stakeholder Engagement



## Convenings

1. Public Workshops
2. City Summit

## Listening Sessions

1. Rural communities
2. Workers
3. People experiencing homelessness
4. People with disabilities and access challenges
5. People without reliable transportation

## Advisory Committee

- 15 representatives from business, community -based organizations, government agencies, academia, health institute, and tribal/native communities

## Tribal/Indigenous Engagement

- Tribal/native communities
- Urban indigenous groups





**Thank you!**

